

Cerec®

Intraoral Workflow Guide



GLIDEWELL LABORATORIES

800-887-3580 • www.glidewelldental.com

How to Fill Out an Rx



Press "Add New Patient"



Fill out patient information. After information is updated, press "Add New Case"



Select tooth number and restoration type. Screen will automatically move forward



Select indication, options include "Crown" and "Inlay/Onlay." Select type, options include "Full Contour" and "Veneered." Then click "Select Material"

How to Fill Out an Rx



Highlight material for restoration, then click "Select Final Shade"



Select a shade guide



Select Shade, then click "Ok"



Verify and click ">>>"

How to Prep Scan



Scan prep arch, press "Upper Jaw" to scan opposing arch



Completed opposing scan, press "Buccal" for buccal bite

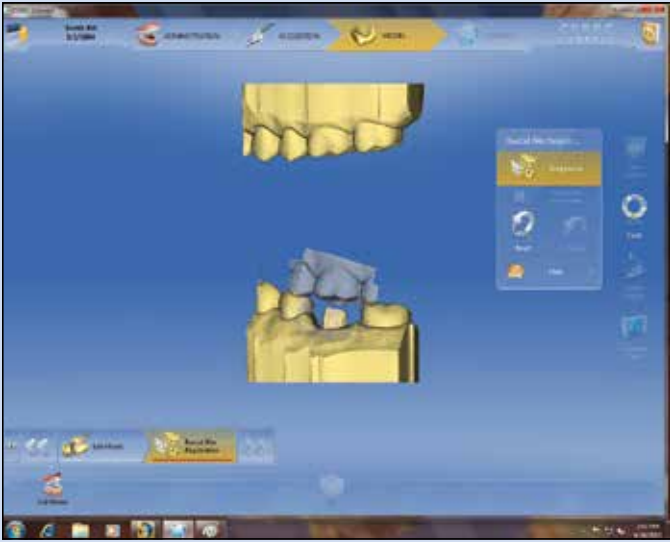


Press ">>" when bite scan is complete



Image spins as it creates virtual model

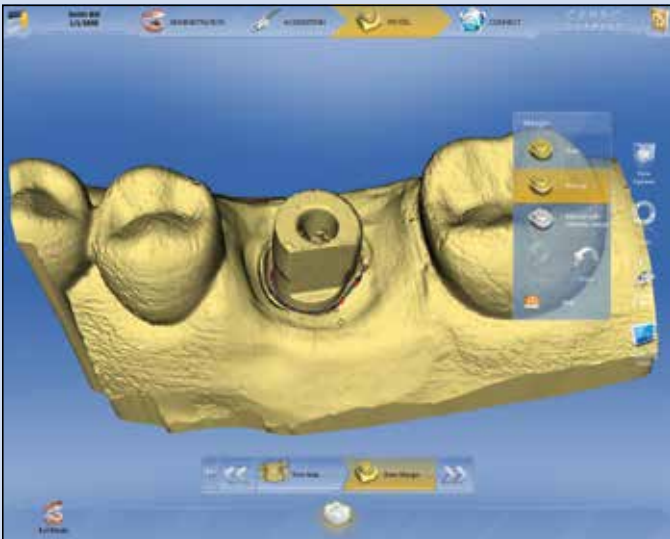
How to Prep Scan



Drag bite registration and opposing into position



Bite has been established, click ">>"



Select "Manual" then doubleclick area to define margin, then press ">>"

How to Send Your Cerec Files to Glidewell Laboratories



Fill out information and press "OK"



Click "Enter Order Data" once upload completes



Select Glidewell Laboratories. Select the return date and time. Finally, press "Add Additional Information"



Highlight patient gender. Fill out implant instructions. Press "Add to Cart"

How to Send Your Cerec Files to Glidewell Laboratories



Click "Submit Cart"



Re-enter user name and password, then press "Ok"



View of current order list



GLIDEWELL LABORATORIES

800-887-3580 • www.glidewelldental.com

GL-3389-0613