

Align Technology iTero™

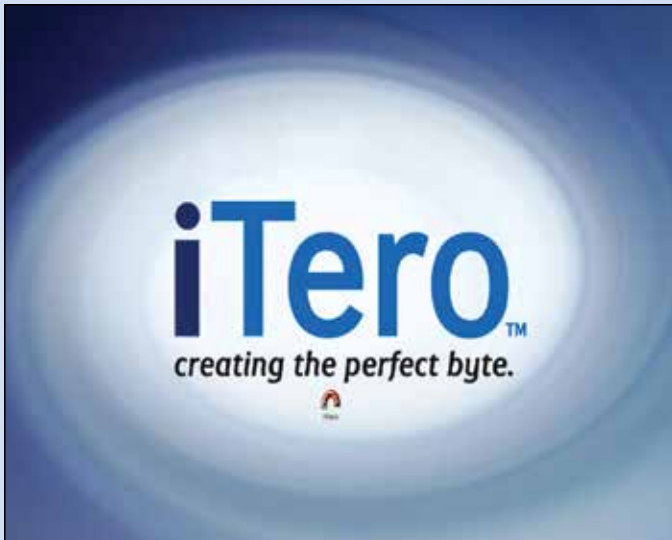
Intraoral Workflow Guide



GLIDEWELL LABORATORIES

800-887-3580 • www.glidewelldental.com

How to Fill Out an Rx



Press the iTero icon



Click "Rx" to create a new case



Fill out the required information indicated by *

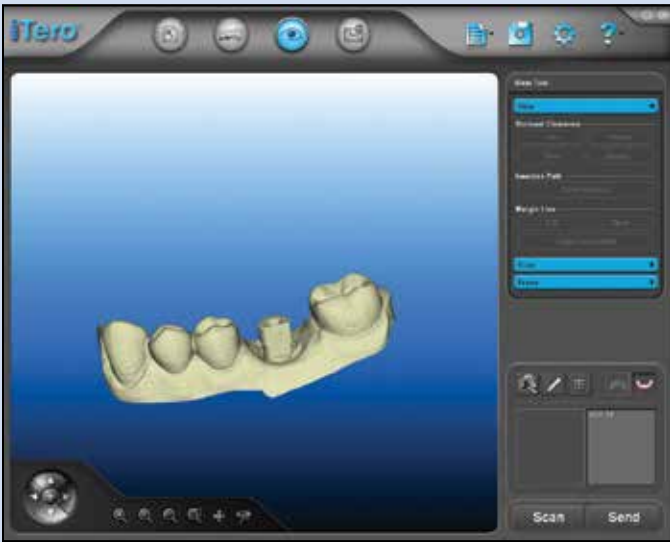


Fill out notes:

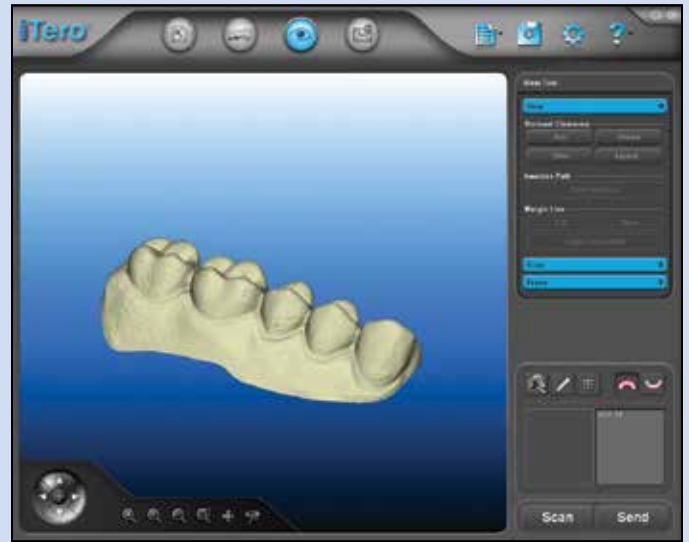
- Implant system
- Implant diameter
- Restoration type

Click "Ok"

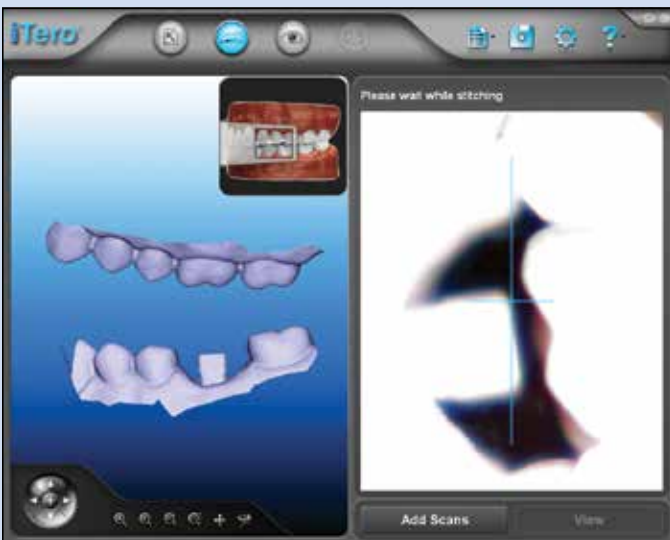
How to Prep Scan



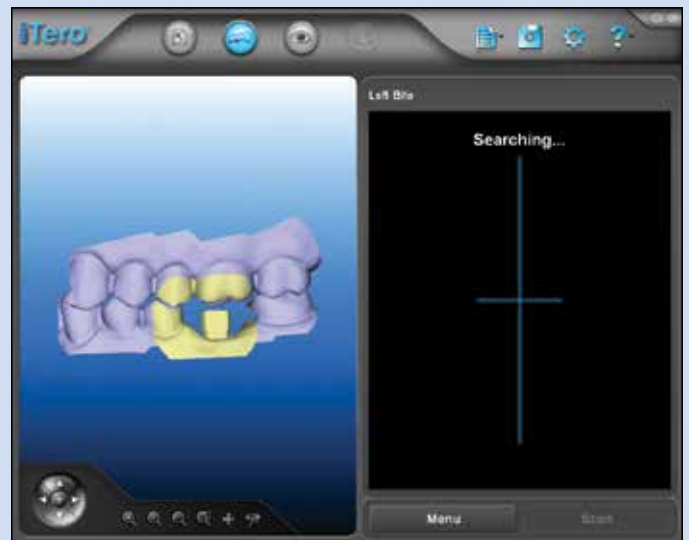
Take prep scan, press "Next"



Take opposing arch scan, press "Next"

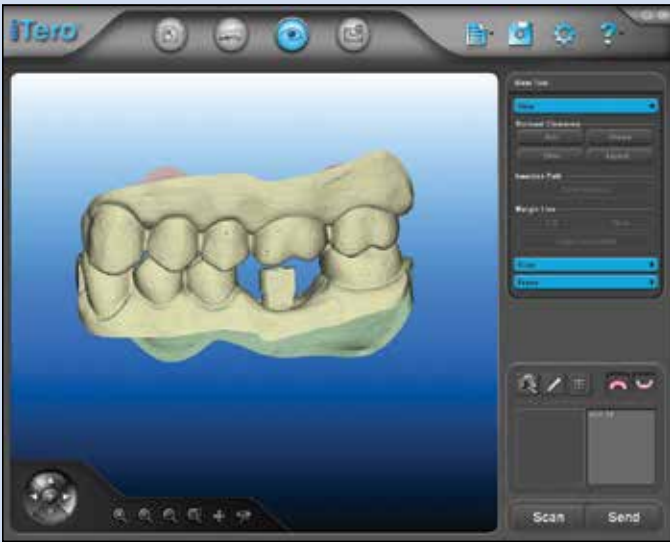


Take bite scan as indicated



Bite scan complete, press "View"

How to Send Your iTero Files to Glidewell Laboratories



When the digital model is complete, press "Send"



A box will appear to confirm you want to send the case, click "Yes"