

# DTP

DIGITAL TREATMENT PLANNING

## STEP-BY-STEP CLINICAL GUIDE — SURGICAL APPOINTMENT

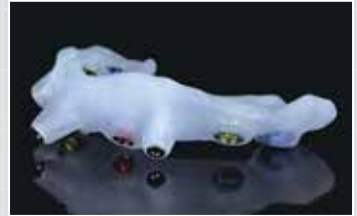


FOR USE WITH TISSUE-SUPPORTED SURGICAL GUIDES

## What You Have Received from Glidewell

---

- Surgical Report
- Surgical Guide with Guide Sleeve(s)
- Anchor Pin Placement Guide



## What You Should Order Prior to Day of Surgery

---

- Implant(s)
- Anchor Pin(s)
- Anchor Pin Osteotomy Drill (ordering a second for backup is recommended)
- Healing Abutment(s)
- Multi-Unit Abutments (optional)
- Multi-Unit Abutment Cover Caps (optional)
- Immediate Provisional(s)
- Bone Profilers (if wide healing abutments or multi-unit abutments are planned)



**Step 1:** Try in the anchor pin guide and verify fit by evaluating the stability of the guide.



**Step 2:** Drill osteotomies for the anchor pins while the patient is biting down, and then remove the anchor pin guide.



**Step 3:** Place the tissue-supported osteotomy guide and secure it in place with the anchor pins.



**Step 4:** Remove soft tissue via tissue punch through the surgical guide.

**NOTE:** The guide may have to be removed to fully relieve the tissue punch.



**Step 5:** Re-seat the surgical guide and anchor pins, verifying the guide is fully seated.



**Step 6:** Sequentially drill osteotomies according to the guided surgical protocol or implant manufacturer's recommended guidelines.



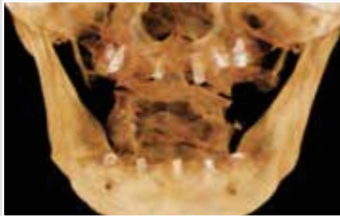
**Step 7:** Place implants through surgical guide according to manufacturer's recommended guidelines.



**Step 8:** Remove the surgical guide.

**Step 9:** Based on the torque and stability of the implant, determine the best loading protocol:

- Cover Screw — hand-tighten
- Healing Abutment — hand-tighten
- Multi-Unit Abutment — implant manufacturer's recommended torque value



**Step 10:** Take radiograph to confirm implant positioning.