



# Implant Overdenture

Utilizing Locator® Attachments

Step-by-Step Restorative Protocol



Implant Overdentures offer a removable implant solution for edentulous patients desiring a stable and esthetic prosthesis that improves retention, function and speech.

## FIRST Appointment

### Preliminary Impression

Although a closed-tray impression technique is described here, open-tray impressions are acceptable. If a custom tray is required, this should be noted along with open or closed tray technique preference on the lab slip.

- Take an implant-level impression, including the palate and vestibules for maxillary impressions.
  - a. Remove the healing abutments from the implants (**Fig. 1**).
  - b. Seat the impression copings on the implants and tighten the screws. Take a periapical radiograph to verify complete seating. Check the impression tray for proper fit.
  - c. Take an implant-level impression of the edentulous arch. After allowing the material to set, carefully remove the impression tray, loosen the screws and remove the impression copings.
  - d. Replace the healing abutments.
  - e. After attaching implant analogs to the impression copings, carefully replace the impression copings back into the impression (**Fig. 2**).
  - f. Send in the case with a lab Rx that identifies the system and diameter of the implants.

*Note: A Locator® Core Tool will be required for the next appointment. The torque wrench will be needed for final delivery. If you need Glidewell to provide a torque wrench, please indicate on Rx.*



**Figure 1:** Remove the healing abutments.



**Figure 2:** Reinsert impression copings into impression.



## SECOND Appointment

### Jaw Relation Records and Shade Selection

You will receive from Glidewell Laboratories a bite block with Locator® caps, and a master model with Locator abutments (Fig. 3).

- Remove the healing abutments from the implants.
- Using the Core tool, tighten the Locator abutments into the same implants indicated on the model (Fig. 4).
- Seat the bite block.

*Note: This may require pressure to engage the attachments.*

- With the patient sitting up, use conventional denture technique to achieve accurate jaw relation records.
- Remove the bite block(s) and Locator abutments. Reseat and tighten the healing abutments on the implants. Thread the Locator abutments back into their correct locations on the model.
- Take an impression of the opposing dentition and an impression of current denture for study model.
- Select the shade and mold of the denture teeth. The study model of the patient's existing denture can be used as a reference regarding the size and shape of the new teeth.

*Note: We will match to Veracia™ denture teeth unless otherwise directed. Indicate the selection on the lab Rx.*

- Send in entire case to Glidewell, including the master model with Locator abutments, bite block, bite registration, opposing impression and study model.



Figure 3: Master model with Locator abutments.



Figure 4: Seat the Locator abutments.

## THIRD Appointment

### Trial Setup Try-in

You will receive from Glidewell Laboratories a trial denture with Locator caps, and a master model with Locator abutments.

- Remove the healing abutments.
- Tighten the Locator abutments into the appropriate implants with the Core Tool and seat the trial denture setup (denture base with teeth in wax).
- Evaluate the VDO, CR, esthetics, shade, tooth arrangement, occlusion, phonetics and midline. If CR is incorrect, a new bite registration should be taken.
- Send clinical photos.
- Remove trial denture and Locator abutments. Thread the Locator abutments back into their correct locations on the model.
- Reseat and tighten the healing abutments.
- Send in entire case, including the trial denture, master model with Locator abutments, opposing model, and lab Rx with reset instructions (if necessary). If a reset is necessary, a new bite registration should also be taken.



## RESET Appointment

### Reset Denture Try-in (if necessary)

You will receive from Glidewell Laboratories a reset denture with Locator caps and a master model with Locator abutments.

- Try-in reset denture according to Third Appointment instructions.
- Approve setup or submit lab Rx with reset instructions.

## FOURTH Appointment

### Delivery of Final Prosthesis

You will receive from Glidewell Laboratories the final overdenture with Locator processing caps and a master model with Locator abutments (Fig. 5).

- Remove healing abutments.
- Using the Core Tool and torque wrench, tighten the Locator abutments to the appropriate torque per manufacturer instructions.
- Deliver the final denture (Fig. 6).
- Confirm the fit, retention and occlusion (Fig. 7). Make adjustments as necessary.

## ONE WEEK

### Follow-Up Check

- Change out the black caps for appropriate retention caps according to chart (Fig. 8). The Locator Coring Tool is required.

*Note: The amount of retention should be based on the number of implants and the strength of the patient. The black caps are not intended for long-term use.*

- Check the occlusion and adjust as necessary.
- Relieve any sore spots.
- Review oral hygiene instructions.
- Set recall schedule.

## MAINTENANCE Appointments

### How to Maintain Final Prosthesis

- Six-month hygiene appointment
  - a. Perform prophylaxis under the prosthesis.
- Twelve-month (annual) hygiene appointment
  - a. Remove prosthesis for thorough cleaning.
  - b. If Locator abutments are damaged or show signs of wear, they should be replaced.



Figure 5: Final overdenture with Locator processing caps.

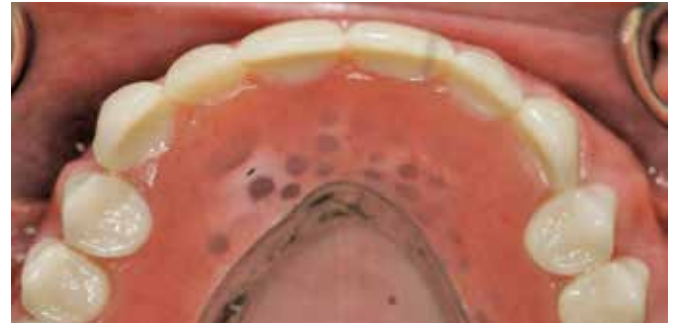


Figure 6: Deliver the final denture.



Figure 7: Confirm occlusion.

	Attachment Cap	Retention
Included with case	Black processing	Processing
Included with case	Blue (extra light retention)	1.5 lbs.
Included with case	Pink (light retention)	3.0 lbs.
Included with case	Clear	5.0 lbs.
	Red (extended range - extra light retention)	1.0 lbs.
	Orange (extended range)	2.0 lbs.
	Green (extended range)	4.0 lbs.

Figure 8: Locator caps retentive order.

Veracia is a registered trademark of Shofu Dental Corporation.  
Locator is a registered trademark of Zest Anchors.  
Clinical photos courtesy of Timothy F. Kosinski, DDS, MAGD.



# Implant Overdenture

## Predictable implant lab fees and no hidden costs

Price (per arch) includes: Two Locator abutments with complete Locator attachments from Zest Anchors; Veracia™ denture teeth; all labor, model and die work; analogs, setups, bite blocks and try-ins. Metal framework available for extra fee.

Locator Implant Overdenture..... **\$655\***

*\*Price may vary based on the number of implants and the cost of ancillary components of chosen implant system.*

Inclusive Tooth Replacement System Locator Overdenture ..... **\$795\***

*(includes implants, healing abutments, impression copings, analogs and final surgical drill)*

## Quick Reference

	Doctor	Glidewell
<b>FIRST</b> Appointment	Implant-level impression	Fabricate casts, select Locator abutments, fabricate bite block (3 days)
<b>SECOND</b> Appointment	Jaw relation records, select tooth shade/mold, impression of opposing dentition and current denture for study casts	Articulate casts, set denture teeth in wax (5 days)
<b>THIRD</b> Appointment	Trial denture setup try-in, photos	Process denture incorporating Locator processing caps (6 days) <u>OR</u> reset (if necessary – 4 days)
<b>RESET</b> Appointment <i>(if necessary)</i>	Try-in and approve reset denture, photos	
<b>FOURTH</b> Appointment	Final prosthesis delivery	
<b>ONE WEEK</b> Post-Delivery Check	Change Locator caps, check occlusion	

**800-839-9755**  
www.glidewell-dental.com

