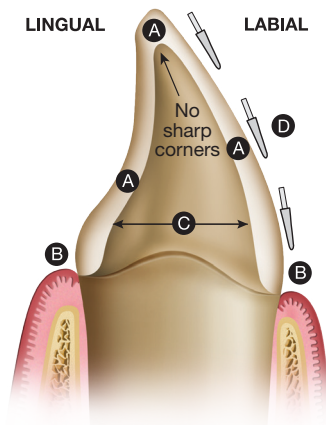


BruxZir® RADIANT

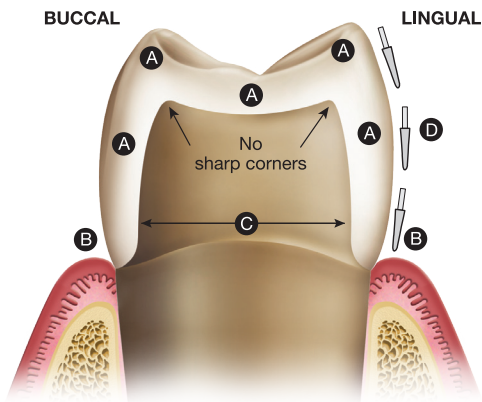
CROWN & BRIDGE PREPARATION GUIDELINES

Anterior



- A. 1.25 mm ideal reduction (0.7 mm minimum)
- B. Chamfer or modified shoulder margins preferred
- C. Axial walls must be convergent (avoid undercuts)
- D. Preparation should be cut in three planes
- E. To achieve optimal impression quality, gingival retraction is necessary for preparations with subgingival or equigingival margins

Posterior



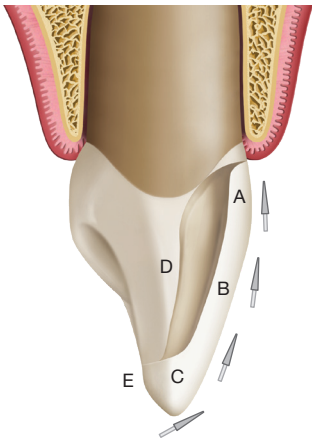
- A. 1.25 mm ideal reduction (0.7 mm minimum)
- B. Chamfer or modified shoulder margins preferred
- C. Axial walls must be convergent (avoid undercuts)
- D. Preparation should be cut in three planes
- E. To achieve optimal impression quality, gingival retraction is necessary for preparations with subgingival or equigingival margins

BruxZir® RADIANT

VENEER

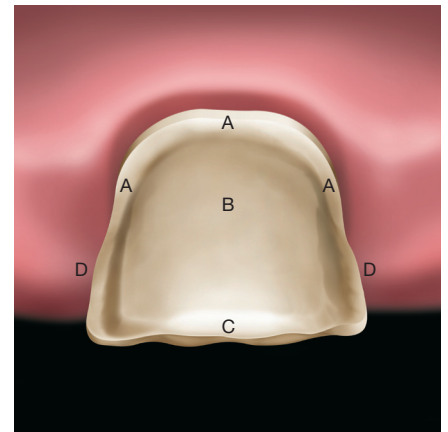
PREPARATION GUIDELINES

Flat incisal edge prep (recommended)

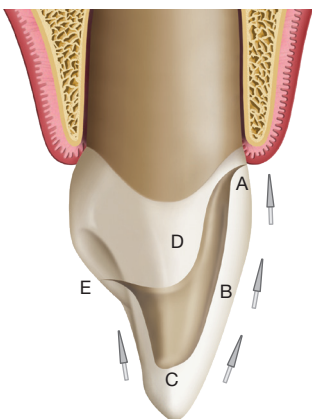


- A. 0.5 mm reduction Chamfer margins
- B. 1 mm–1.5 mm reduction cut along three planes. Ensure all finish lines are visible from facial-incisal path of insertion by eliminating undercuts.
- C. 1.5 mm incisal reduction (from planned incisal edge position to avoid over-reduction). Butt joint inciso-lingual margin.
- D. Extend halfway through contact area interproximally. Extend further lingual and break contact if there are defects (caries, cracks, existing restorations).
- E. Lingual margin at least 1 mm away from opposing contact

To achieve optimal impression quality, ensure all finish lines are free from debris & gingival obstruction.



Incisal overlap preparation



- A. 0.5 mm reduction Chamfer margins
- B. 1 mm–1.5 mm reduction cut along three planes. Ensure all finish lines are visible from facial-incisal path of insertion by eliminating undercuts.
- C. 1.5 mm incisal reduction (from planned incisal edge position to avoid over-reduction). Butt joint inciso-lingual margin.
- D. Extend halfway through contact area interproximally. Extend further lingual and break contact if there are defects (caries, cracks, existing restorations).
- E. Lingual margin at least 1 mm away from opposing contact

To achieve optimal impression quality, ensure all finish lines are free from debris & gingival obstruction.

