

# EXPORTING FROM **Acteon<sup>®</sup> Viewer**

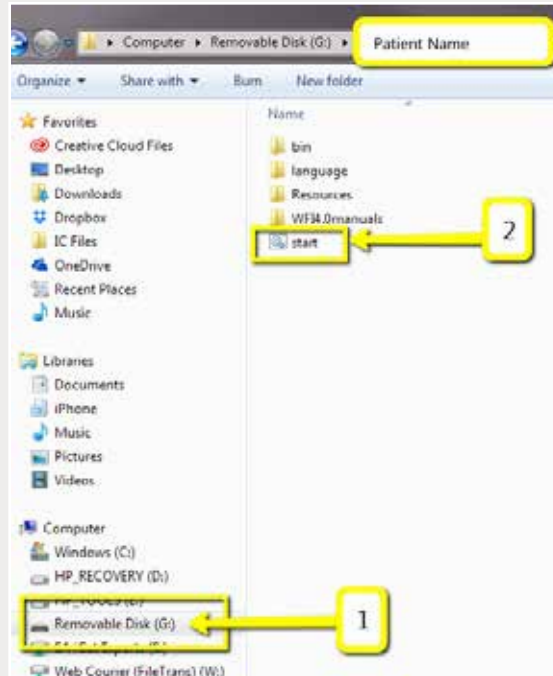
---

UPLOAD GUIDE



866-497-3692 • [glidewelldental.com](http://glidewelldental.com)

Note: If using the Instrumentarium Dental OP300 or Gendex GXDP-700™, instructions will not apply. Please contact your local representative for assistance on extracting the raw data from your CT scanner.

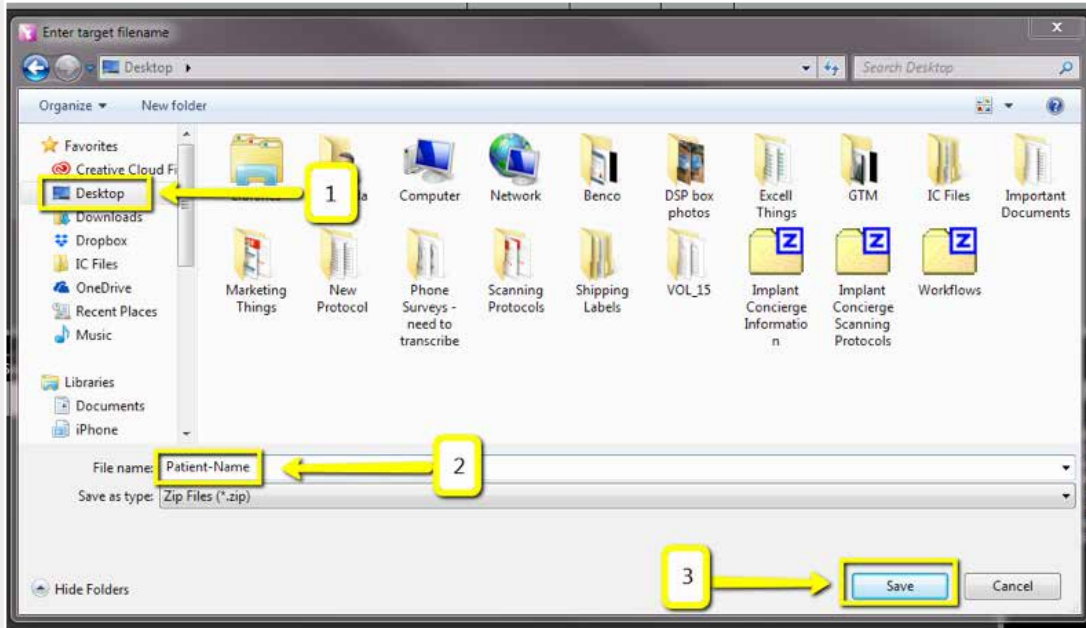


Step 1: Open the USB/CD and click “start”.



Step 2: When the CBCT loads, click the folder icon found under “DICOM Series”, then click “Zip DICOM series”.

Note: If using the Instrumentarium Dental OP300 or Gendex GXDP-700™, instructions will not apply. Please contact your local representative for assistance on extracting the raw data from your CT scanner.



Step 3: Select “Desktop” when prompted for the save location. Enter the patient’s name in the “File name” field and click “Save”.



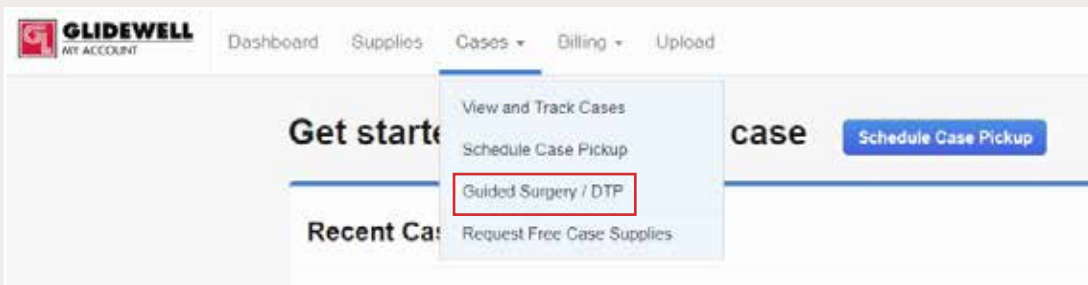
Step 4: A progress bar will appear in the upper right-hand corner; there will not be an alert when exporting is complete.

Note: If using the Instrumentarium Dental OP300 or Gendex GXDP-700™, instructions will not apply. Please contact your local representative for assistance on extracting the raw data from your CT scanner.

3



Step 5: Upload your case on [glidewelldental.com](http://glidewelldental.com), then click and log in to “My Account”. Note: Use Google Chrome when uploading your case; additionally, if you do not have an account, please contact us and we will set it up for you. Your scan can also be sent on a disc or USB drive via standard shipping methods if digital upload is not possible.



Step 6: Select “Cases” → “Guided Surgery/DTP”.

Note: If using the Instrumentarium Dental OP300 or Gendex GXDP-700™, instructions will not apply. Please contact your local representative for assistance on extracting the raw data from your CT scanner.

**Guided Surgery & Digital Treatment Planning Cases**

All ▾

[Request New Plan](#)

Step 7: Select "Request New Plan".

### Request a New Digital Treatment Plan

We use the Hahn Implant System for our digital treatment plans to bring you the best options and prices.

	BEST VALUE
<b>Surgical Guide with Treatment Plan</b>	<b>Hahn Surgical Guide Bundle</b>
<b>\$295</b>	<b>\$395</b>
for the first implant	for the first implant
\$100 each additional implant per arch	\$200 each additional implant per arch
<a href="#">Select Option</a>	<a href="#">Select Option</a>
What's included:	What's included:
<ul style="list-style-type: none"><li>✓ Treatment Plan &amp; Surgical Guide</li></ul>	<ul style="list-style-type: none"><li>✓ Treatment Plan &amp; Surgical Guide</li><li>✓ Hahn Tapered Implant</li><li>✓ Healing Abutment</li><li>✓ Impression Coping / Scan Body</li></ul>

Step 8: Select desired package.