

# Practice performance is a heavy lift. **Think again.**

Proprietary Multi-Direct Capture™ technology

3x larger field of view

50% smaller wand<sup>1</sup>



## **Introducing the new iTero Lumina™ intraoral scanner, the next generation of digital scanning technology.**

The iTero Lumina™ scanner pushes the boundaries of what intraoral scanners can do and sets a new standard for practice performance. With effortless scanning and superior visualization<sup>2</sup>, this small wand means a big leap for your practice.

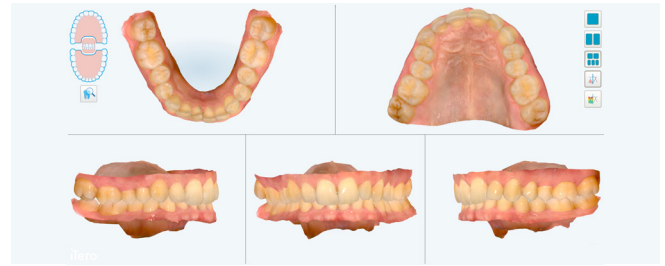
**iTero** lumina™

## How it works

The iTero Lumina™ scanner is powered by **iTero Multi-Direct Capture™ technology**, developed to quickly<sup>3</sup>, easily<sup>4</sup>, and accurately<sup>5</sup> capture more data while delivering exceptional scan quality.



**3X larger field of view<sup>4</sup>** and **maximum capture distance of 25mm** designed to simplify the capture of challenging areas such as palates, edentulous spaces, partially erupted and crowded teeth.



**Photorealistic 3D models comparable to intraoral photos<sup>2</sup>** thanks to advanced optics and innovative new software.

## Key benefits

### High-quality clinical decisions.

Achieve photorealistic scans that enable high-quality clinical decisions the same way intraoral photos do<sup>2</sup>, through larger data capture, high accuracy<sup>5</sup>, and new advanced software.

### Practice efficiency & profitability.

Scan effortlessly at 2x the speed<sup>3</sup> with exceptionally wide field of view and capture distance, enabling minimal maneuvering that sets a new level of ergonomics and comfort. Plus, eliminate the need for intraoral photos<sup>2</sup> for Invisalign® case submission.

### Elevated patient comfort & engagement.

Offer a more comfortable experience for adults, kids and teens alike, with a 50% smaller wand<sup>1</sup> and increased scanning speed. Plus, enhance patient engagement and motivation<sup>2</sup> with exceptional 3D model quality<sup>5</sup> across all visualizations and simulations.

1. Compared to iTero Element™ 5D imaging system wand, excluding the wand cable.\*

2. For Invisalign record-taking cases only. Based on a survey in September 2023 of n=22 users who participated in a global limited market release, working with iTero Lumina™ intraoral scanner for an average period of 6 months, representing both Invisalign trained general practitioners, orthodontists and their staff in NA, EU and APAC, who were presented with a 4 point level of agreement scale from strongly agree to strongly disagree with the following statement: "iTero Lumina™ intraoral scanner 3D model is comparable to that of an intraoral photo," and "iTero Lumina™ intraoral scanner photorealistic scans enable orthodontic clinical assessment the same way intraoral photos do." and "iTero Lumina™ intraoral scanner 3D model's superior 3D model eliminates the need to take intraoral photos." and "iTero Lumina™ intraoral scanner 3D model's superior 3D model boosts patient engagement."

3. Save time with an enhanced scanning experience in which the user can scan 2x faster\* compared with previous iTero intraoral scanners. \*Compared to iTero Element™ 5D wand with tolerance AVE=±0.1 operating at a working distance from 0-20 mm.\*

4. The iTero Lumina™ intraoral scanner offers 3x larger field of view enabling faster scanning. Compared to the field of view of the iTero Element™ 5D imaging system, when the iTero Lumina™ intraoral scanner's scanning distance is 12 mm.\*

5. The iTero Lumina™ intraoral scanner has scientifically proven greater accuracy\* for your clinical orthodontic needs. \*Compared to the accuracy of the iTero Element™ 5D imaging system.\*

\*Data on file at Align Technology, as of November 15, 2023.

align™

©2024 Align, iTero, iTero Element, iTero Lumina, and Invisalign are trademarks of Align Technology, Inc. | A020165 Rev A



iTero lumina™