

# iTero™

## Advance your practice with iTero™ intraoral scanners

With just one scan<sup>1</sup>, experience over **20 years** of technological innovation that enables restorative and orthodontic workflows.

Find the right solution for your practice from our innovative range of iTero™ scanners. With our comprehensive iTero™ Service Plan and exceptional support, we'll help you get the most out of your investment.

### All of our iTero scanners help you achieve:



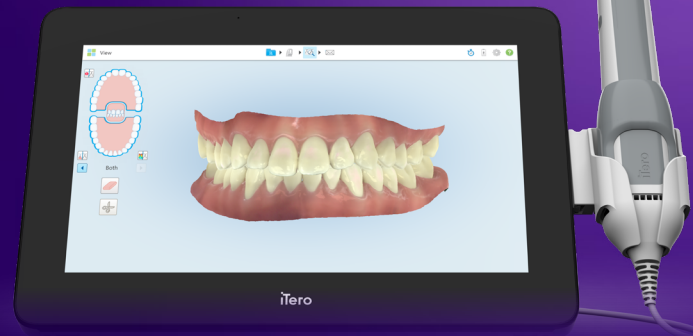
**Exceptional clinical outcomes** with scientifically-proven accuracy<sup>1,2</sup> and visualization applications, such as iTero™ Occlusogram and iTero™ TimeLapse technology.



**Increase efficiency and productivity<sup>3</sup>** with seamless connectivity with Invisalign® workflows and exocad™ software, as well as advanced visualization applications such as Invisalign® Outcome Simulator.



**Elevated patient experience** due to improved comfort of digital impressions versus traditional methods<sup>4</sup>, and excellent proprietary visualization tools leading to higher understanding and acceptance of treatment<sup>5,6</sup>.



**iTero Element™ 5D Plus  
in mobile configuration**



**iTero Lumina™  
in cart configuration**

## Key features

This table provides a breakdown of the features you will have access to with each product, in addition to the solutions that are available with every iTero Element scanner: iTero Occlusogram, iTero TimeLapse technology, Invisalign Outcome Simulator, Invisalign Progress Assessment tool and iTero Scan Report.

	iTero Lumina	iTero Element 5D Plus	iTero Element 5D Plus Lite	iTero Element 5D imaging system	iTero Element Plus Package and Laptop	iTero Element Flex scanner
<b>Unique proprietary features</b>						
iTero™ Multi-Direct Capture technology	■					
Photorealistic scan images	■					
Invisalign® Outcome Simulator Pro with In-Face Visualisation	■	■	■		■	
iTero™ 5D auto-upload feature	■	■	■	■	■	
iTero™ NIRI technology (Near Infra-Red Imaging) †		■	□ †	■	■	
Align Oral Health Suite (comprehensive patient-centric interface)	■	■	■		■	
<b>Hardware features</b>						
High-definition intraoral camera	■	■	■		■	
Dedicated AI processors for enhanced processing power	■	■	■		■	
Integrated battery for uninterrupted scanning	■	■	■	■		
All-in-one medical grade configuration	■	■	■	■		
Laptop** configuration					■	■
<b>Software configurations</b>						
Ortho Comprehensive (allows Invisalign and orthodontic procedures)	■	■	■	■	■	■
Restorative Comprehensive (all orthodontic, Invisalign and restorative procedures)		■	■	■	■	■
<b>Footprint and ergonomics</b>						
Optimized footprint	■	■	■			
Optimized height for better viewing angles	■	■	■			
Mobile configuration with VESA mounting option available	■	■	■			
Custom-designed carrying case with mobile or laptop** configurations	■	■	■	■	■	■

†NIRI technology can be enabled with a software upgrade when you are ready.

\*\*iTero Element Flex intraoral scanners are available in new or Certified Pre-Owned condition. Certified Pre-Owned (CPO) scanners are original equipment manufacturer certified refurbished units. They may not be offered in all regions and are subject to availability.

\*\*Laptop is not included

**References:** 1. Accuracy defined as a combination of trueness and precision tested on different substrates, under different lighting conditions, for crown preparation and full-arch scanning. Based on the results of 12 peer-reviewed papers 2018–2020. Data on file at Align Technology, as of November 20, 2020. 2. The iTero Lumina™ intraoral scanner meets the American Dental Association Standard for Accuracy. 3. American National Standard/American Dental Association Standard No. 132 for Scanning Accuracy of Dental Chairside and Laboratory CAD/CAM Systems. 3. Based on a survey in September 2023 of n=22 users who participated in a global limited market release, working with iTero Lumina™ intraoral scanner for an average period of 6 months, representing both Invisalign™ trained general practitioners and orthodontists, and their staff in NA, EMEA and APAC, who were presented with a 4 point level of agreement scale from strongly agree to strongly disagree with the following statement: "The iTero Lumina™ intraoral scanner increases the efficiency and productivity in my clinic." 4. Emir Yuzbasiglu, Haneff Kurti Rana Turunc, and Halenur Bilir. "Comparison of digital and conventional impression techniques: evaluation of patients' perception, treatment comfort, effectiveness and clinical outcomes." BMC Oral Health. Published online January 30, 2014. n = 24 in a study comparing polyether with Cerac. 5. Based on a global survey in October 2023 of n=41 Invisalign trained doctor respondents who utilized Align Oral Health Suite 20 times or more during the global limited market release period of August 2023 to October 2023, representing both GPs (n=27) and Orthos (n=14) in NA, APAC, EMEA, and LATAM. Doctors were asked: "Please indicate your agreement with the following statement: Align Oral Health Suite helps build patient understanding and trust in their diagnosis and treatment recommendations." Available on the iTero Element Plus Series and iTero Lumina. Agreement scale is 1-4 with 1 being "strongly disagree" and 4 being "strongly agree." Data on File at Align Technology, as of November 17, 2023. 6. Compared to the iTero Element™ 5D imaging system. Data on file at Align Technology, as of November 15, 2023.