

## Clinical Workflow

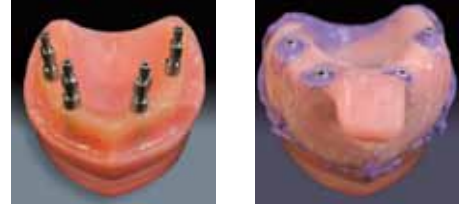
### First Appointment: Preliminary Impressions

Utilizing a stock tray, take a preliminary impression, including the palate and vestibules. This impression can be made at the implant level or over the healing abutments, as it will be used to fabricate a custom tray for an open-tray impression technique.



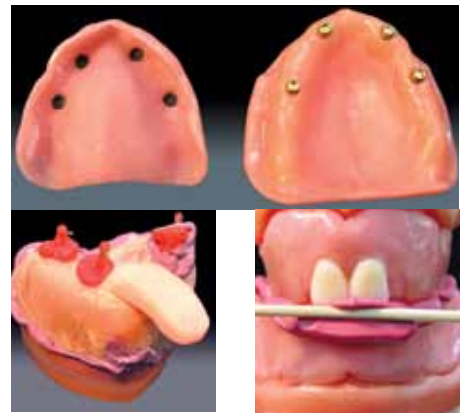
### Second Appointment: Final Impressions

With custom tray provided, take implant-level impression of edentulous arch and opposing dentition, as well as the denture to be replaced.



### Third Appointment: Jaw Relation Records and Shade Selection

Obtain jaw relation records. Select denture tooth shade and mold.



### Fourth Appointment: Trial Denture Setup Try-in

Try in denture with Locator attachments. Evaluate CR, VDO, occlusion, esthetics, and phonetics. Alter setup as needed. Document with photos.



### Fifth Appointment: Delivery of Final Prosthesis

Deliver final prosthesis.

Follow up in one week to change out the black Locator processing caps and provide final caps with desired retention.

